

Symbol	Qty	Label	Arrangement	Description	Arr. Lum. Lumens	LLF	Arr. Watts
AS-3	5	AS-3	SINGLE	300W LED-1 HEAD POLE MTD.	40266	0.900	298
AS-4	17	AS-4	SINGLE	300W LED-1 HEAD POLE MTD.	42344	0.900	300
AS-4BN	6	AS-4BN	SINGLE	300W LED-1 HEAD NEW 39' POLE & 5' BASE (NEW LOCATION)	42344	0.900	298
AS-4N	2	AS-4N	SINGLE	300W LED-1 HEAD NEW 39' POLE & 5' BASE (NEW LOCATION)	42344	0.900	300
AS-4P	1	AS-4P	SINGLE	300W LED-1 HEAD NEW 39' POLE & 5' BASE (EXISTING LOCATION)	42344	0.900	300
AS2-3	1	AS2-3	TWIN	300W LED-2 HEAD POLE MTD.	80532	0.900	596
AS2-3-180	2	AS2-3-180	BACK-BACK	300W LED-2 HEAD POLE MTD.	80532	0.900	596
AS2-4	7	AS2-4	TWIN	300W LED-2 HEAD POLE MTD.	84688	0.900	600
AS2-4-180	5	AS2-4-180	BACK-BACK	300W LED-2 HEAD POLE MTD.	84688	0.900	600
AS2-4-180N	2	AS2-4-180N	BACK-BACK	300W LED-2 HEAD NEW 39' POLE & 5' BASE (NEW LOCATION)	84688	0.900	600
AS2-4N	2	AS2-4N	TWIN	300W LED-2 HEAD NEW 39' POLE & 5' BASE (NEW LOCATION)	84688	0.900	600
AS2-4P	2	AS2-4P	TWIN	300W LED-2 HEAD 39' POLE & 5' BASE (EXISTING LOCATION)	84688	0.900	600
AS3-4-120	1	AS3-4-120	3 @ 120D SEP	300W LED-3 HEAD POLE MTD.	127032	0.900	900
AS3-4-90	6	AS3-4-90	3 @ 90 DEGREES	300W LED-3 HEAD POLE MTD.	127032	0.900	900
AS3-4-90N	2	AS3-4-90N	3 @ 90 DEGREES	300W LED-3 HEAD NEW 39' POLE & 5' BASE (NEW LOCATION)	127032	0.900	900
AS4-4	2	AS4-4	4 @ 90 DEGREES	300W LED-4 HEAD POLE MTD.	169376	0.900	1200
B-3	20	B-3	SINGLE	200W LED-1 HEAD POLE MTD.	27002	0.900	205
B-4	18	B-4	SINGLE	200W LED-1 HEAD POLE MTD.	27500	0.900	202
B2-3-180	1	B2-3-180	BACK-BACK	200W LED-2 HEADS POLE MTD.	54004	0.900	410
B2-4-180	2	B2-4-180	BACK-BACK	200W LED-2 HEADS POLE MTD.	55000	0.900	404
C-28	98	C-28	SINGLE	28W LED CANOPY - SURFACE MTD.	3585	0.900	28
E-33	7	E-33	SINGLE	300W LED-1 HEAD NEMA 3X3 FLOOD POLE MTD	40531	0.900	321
E-33BN	2	E-33BN	SINGLE	300W LED-1 HEAD NEMA 3X3 FLOOD BLDG. MTD (NEW LOCATION)	40531	0.900	321
E-33N	4	E-33N	SINGLE	300W LED-1 HEAD NEMA 3X3 FLOOD POLE MTD (NEW LOCATION)	40531	0.900	321
E-55	2	E-55	SINGLE	300W LED-1 HEAD NEMA 5X5 FLOOD POLE MTD	44041	0.900	324
E-55BN	1	E-55BN	SINGLE	300W LED-1 HEAD NEMA 5X5 FLOOD BLDG. MTD (NEW LOCATION)	44041	0.900	324
E-55N	3	E-55N	SINGLE	300W LED-1 HEAD NEMA 5X5 FLOOD POLE MTD	44041	0.900	324
E-64	1	E-64	SINGLE	300W LED-1 HEAD NEMA 6X4 FLOOD POLE MTD	43129	0.900	321
WP-12	22	WP-12	SINGLE	15W LED WALLPACK	1933	0.900	12
WP-28	5	WP-28	SINGLE	28W LED WALLPACK	3265	0.900	28
WP-28N	3	WP-28N	SINGLE	28W LED WALLPACK (NEW LOCATION)	3265	0.900	28
FL1	1	FL1	FLAG LIGHTING	95W NARROW BEAM FLOOD - 2 FIXTURES			
FL2	1	FL2	SIGN LIGHTING	87W WIDE BEAM FLOOD - 2 FIXTURES			

Label	CalcType	Units	Avg	Max	Min	Avg/Min	Max/Min
EMPLOYEE LOT 1	Illuminance	Fc	4.66	25.1	0.8	5.83	31.38
EMPLOYEE LOT 2	Illuminance	Fc	4.84	18.1	0.9	5.38	20.11
ENTRY DRIVE	Illuminance	Fc	4.66	17.6	0.8	5.83	22.00
ENTRY GATE	Illuminance	Fc	8.29	16.4	4.9	1.69	3.35
FEDEX LOT	Illuminance	Fc	3.82	19.2	0.6	6.37	32.00
TRAILER BACK 2	Illuminance	Fc	3.45	6.9	1.0	3.45	6.90
TRAILER BACK 3	Illuminance	Fc	3.45	6.9	1.5	2.30	4.00
WALKWAY1	Illuminance	Fc	9.85	13.9	7.1	1.39	1.96
WALKWAY2	Illuminance	Fc	7.70	11.7	5.8	1.33	2.02
WALKWAY3	Illuminance	Fc	8.35	11.2	5.8	1.44	1.93
WALKWAY4	Illuminance	Fc	7.09	10.0	5.6	1.27	1.79
WALKWAY5	Illuminance	Fc	13.37	29.1	4.6	2.91	6.33
WALKWAY6	Illuminance	Fc	10.83	12.0	10.2	1.07	1.18
WALKWAY7	Illuminance	Fc	10.10	10.7	9.5	1.06	1.13

**LIGHT POLE BOLLARD REQUIREMENT KEY**

○ THIS LOCATION TO INCLUDE BOLLARD PROTECTION

◇ NEED FOR BOLLARD PROTECTION IN THIS LOCATION TO BE FIELD DETERMINED.

**LIGHT POLE BOLLARD REQUIREMENT NOTE:**

ALL NEW LIGHT POLES WITHIN PAVED TRAILER PARKING AREAS SHALL BE PROTECTED BY BOLLARDS OR OTHER APPROVED METHOD. BOLLARDS ARE NOT REQUIRED AT PERIMETER LOCATIONS BASED ON MAINTAINING 15'-0" CLEAR BEHIND CURB AT LONG TRAILERS AND 5'-0" FOR 28' TRAILERS, AND MAINTAIN 10'-0" CLEAR BETWEEN TRAILER PARKING.

**EXCLUSIONS:**

- SOME LUMINAIRES HAVE BEEN TILTED UP ABOVE HORIZONTAL (SEE TILT NEXT TO FIXTURE CODE ON DRAWING)
- ALL CALCULATION POINTS LESS THAN 1.0 fc ARE HIGHLIGHTED IN RED.
- CALCULATION POINTS LESS THAN 15 FT FROM TRAILER OBSTRUCTIONS HAVE BEEN REMOVED DUE TO SHADOWING.
- EXISTING BUILDING AND POLE MOUNTED FIXTURE LOCATIONS WERE ESTIMATED USING SATELLITE IMAGES. ACTUAL LOCATIONS MUST BE FIELD VERIFIED.
- AREA SCOPE OF WORK WAS ESTIMATED FROM SATELLITE IMAGERY. SCOPE AREA MUST BE FIELD VERIFIED.

**ALL NEW POLE AND BUILDING MTD. LOCATIONS MUST BE FIELD VERIFIED PRIOR TO ORDERING & INSTALLATION.**

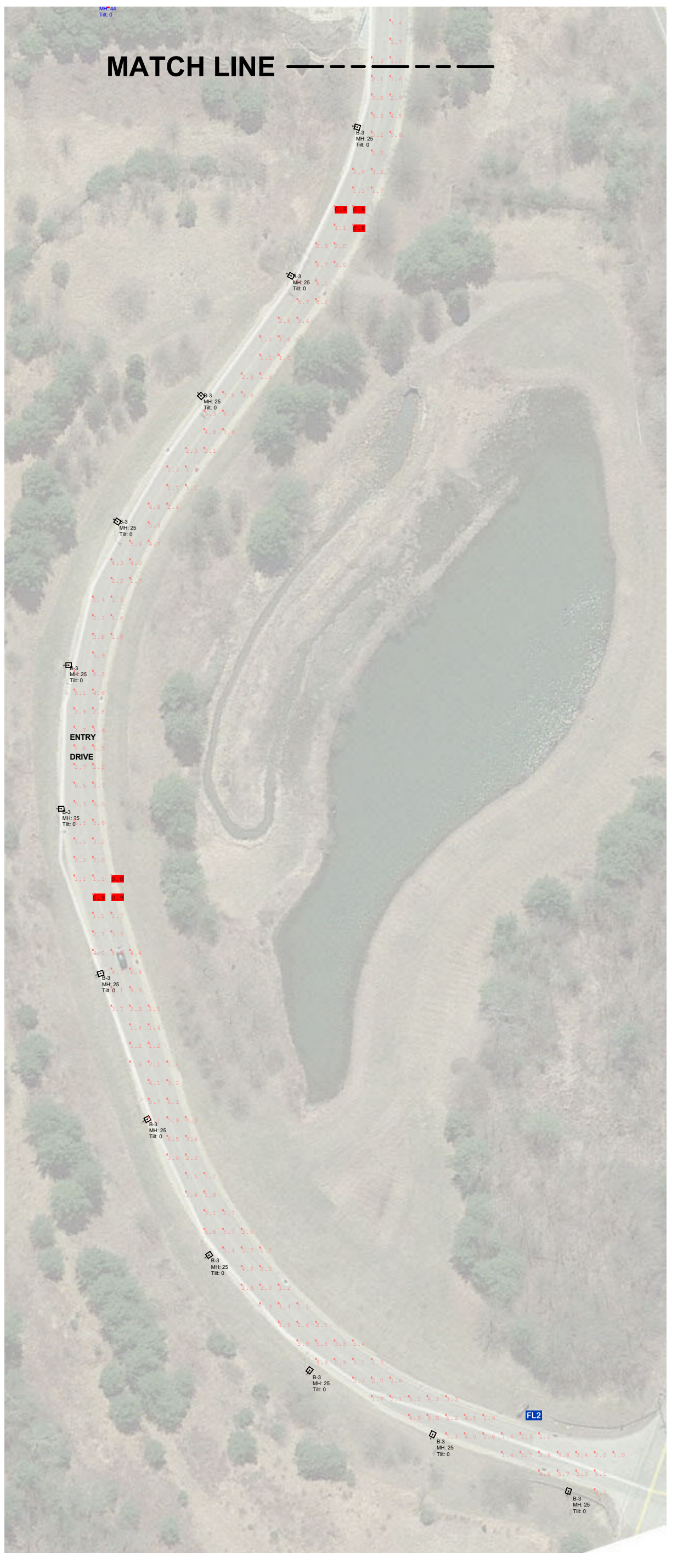
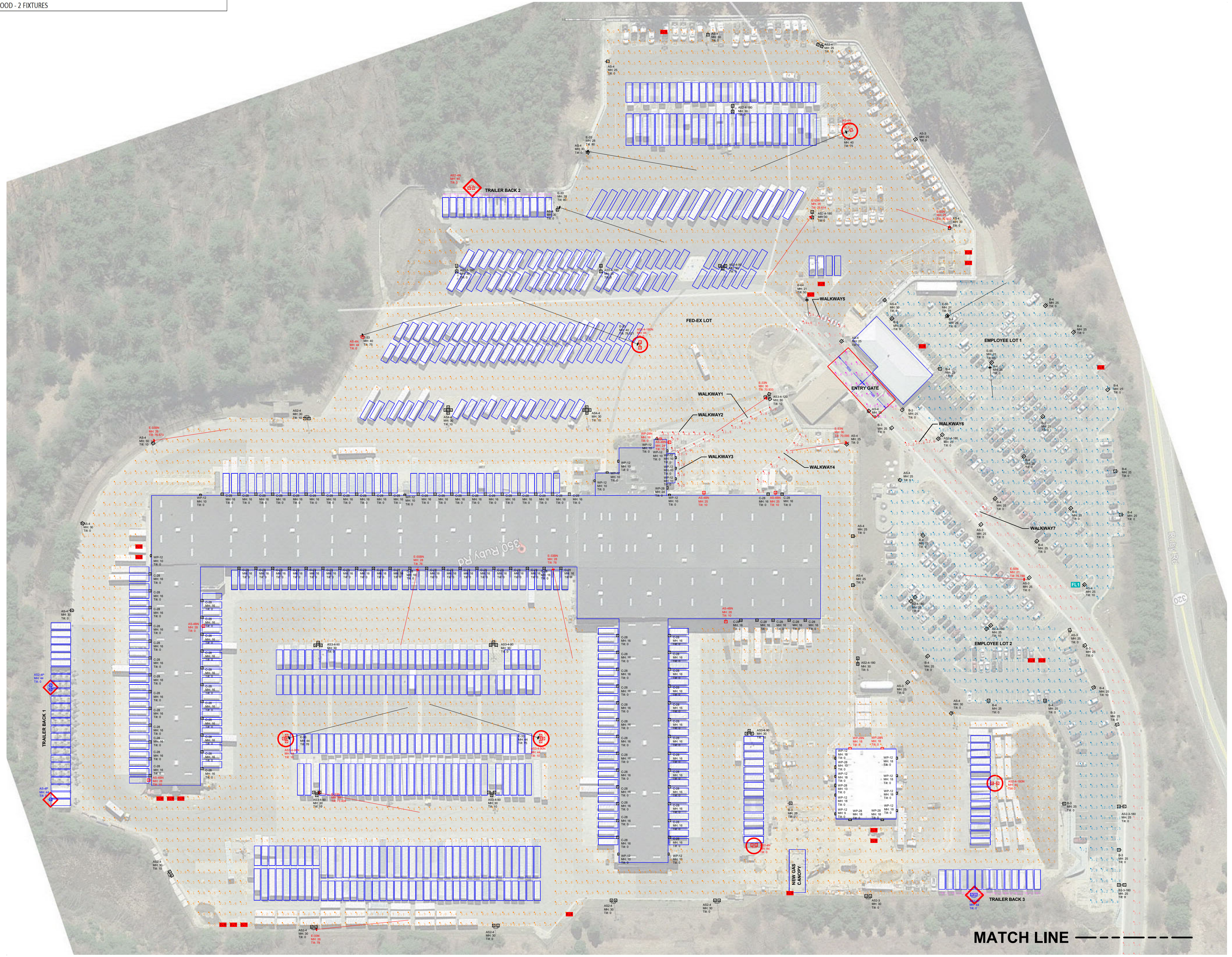
- NOTES:**
- HORIZONTAL LIGHT LEVELS WERE CALCULATED AT 3' AFG USING 15' X 15' INTERVALS.
  - BUILDINGS AND TRAILERS HAVE BEEN ADDED AS OBSTRUCTIONS.
  - FIXTURE LOCATIONS MUST BE VERIFIED FOR FIELD CONDITIONS PRIOR TO ORDERING AND INSTALLATION.
  - NO CONTRIBUTING LIGHTING WAS INCLUDED IN THIS CALCULATION.
  - ALL POLES & FIXTURES MUST MEET THE EPA WINDLOADING REQUIREMENTS.
  - ALL EXISTING POLES AND BASES MUST BE CHECKED FOR DAMAGE AND SUITABILITY TO SUPPORT THE LUMINAIRES PROPOSED.
  - ALL MOUNTING HARDWARE TO BE FIELD DETERMINED- ADDITIONAL TENONS MAY BE REQUIRED.
  - ANY CHANGE IN FIXTURE SPECIFICATION AND/OR LAMP TYPE, OR MODIFICATION TO THE DESIGN, CAN ALTER PROPOSED LIGHT LEVELS.
  - DRAWING FOR PHOTOMETRIC USE ONLY, NOT TO BE USED FOR CONSTRUCTION.

- REVISIONS:**
1. REVISED 4-1-19 BY H.C.P. UPDATED SPECIFICATIONS FOR 300W LED LUMINAIRES; ADDED BOLLARD NOTE.
  2. REVISED 07-18-19 BY A.J.U. UPDATED DRAWING TO NEW SPECIFICATIONS.
  3. REVISED 12-16-19 BY M.J.F. UPDATED DRAWING TO INCLUDE MORE RECENT AUDIT POLE LOCATIONS.

LUMINAIRE DATA IS OBTAINED ACCORDING TO IES PROCEDURES UNDER LABORATORY CONDITIONS. FIELD RESULTS MAY DIFFER FROM THIS COMPUTER MODEL DUE TO MANY FACTORS, INCLUDING AMBIENT TEMPERATURE, LINE VOLTAGE VARIATIONS, INSTALLATION, REFLECTANCES, AND OTHER SITE SPECIFIC CONDITIONS.

THIS DRAWING IS THE EXCLUSIVE PROPERTY OF SLS ENERGY SOLUTIONS CORPORATION. ANY USE, INCLUDING COPYING OR REPRODUCTION OF THE ENTIRETY OR ANY PORTION HEREOF, WITHOUT THE EXPRESS WRITTEN CONSENT OF SLS ENERGY SOLUTIONS CORPORATION, IS STRICTLY PROHIBITED. FAILURE TO OBTAIN THE EXPRESS WRITTEN CONSENT OF SLS ENERGY SOLUTIONS CORPORATION, PRIOR TO USE, WILL RESULT IN A MINIMUM FINE OF FIVE THOUSAND DOLLARS (\$5000) FOR EACH UNAUTHORIZED USE, IN ADDITION TO MARKET RATE CHARGES FOR THIS AND ANY RELATED DRAWING(S).

SLS ENERGY SOLUTIONS CORPORATION  
ALL RIGHTS RESERVED.



**PROPOSED SOLUTION (WITH TRAILERS ADDED)  
PHOTOMETRIC DRAWING**

