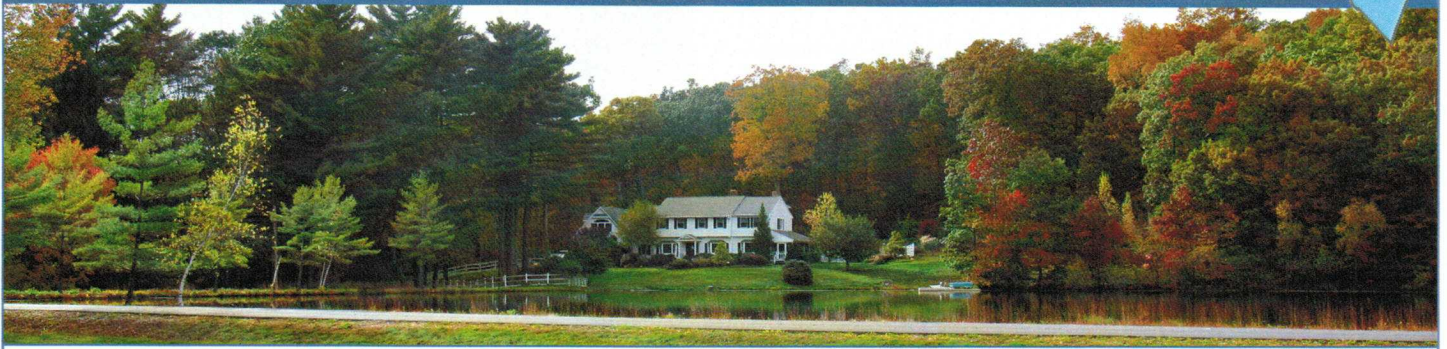
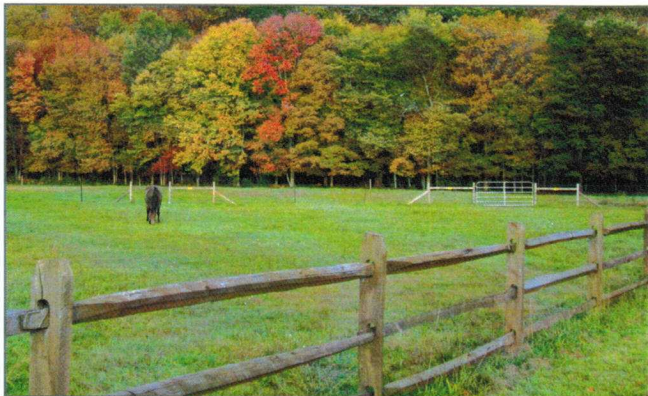


# WILLINGTON

Raise a Family and Grow your Business



**W**illington is a 33 square mile, rural town in northeastern Connecticut with a population of approximately 6,500 people. Its various historic villages offer classic New England architecture, farms, rolling hills, and a variety of recreational opportunities. Willington boasts great schools and diverse and affordable housing, all located within easy and convenient commuting distance to Hartford. The Willington Economic Development Commission, and local officials, provide resources and support for new and existing businesses while targeting key locations for development or expansion. Located near the forest, the rivers, the city and the University of Connecticut (UConn), Willington is a great place to raise a family or expand a business.



## Residents/Families:

**Recreation:** Willington has an active Parks and Recreation Department that offers participation in local and regional sports programs, outdoor events, and a kayak loaner program to take advantage of the numerous lakes and rivers in Town. State Forests and associated trail systems and organizations like the Last Green Valley and the Willimantic River Alliance provide access and guides to spectacular natural settings in Town and in the region.

**Education:** Willington's school system boasts above average performance testing results and quality recreation facilities and programs. Willington's proximity to UConn provides close access to a high quality education at an affordable cost, as well as numerous sporting, arts, and cultural events.

*(Continued on the back page)*

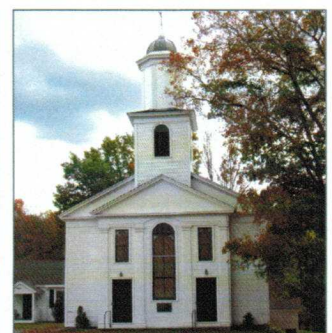
## Businesses:

Willington boasts an Economic Development Commission (Willington EDC), whose core mission is to assist current Willington businesses and also businesses relocating to Willington. The Willington EDC is affiliated with the Northeast Alliance, a regional business assistance group that provides financing resources, management consulting, and coordination of state, municipal, and private ventures.

Additionally the nearby University of Connecticut offers its advanced industrial research centers and cooperative private ventures. UConn also serves as an excellent source for interns, provides a technology incubator program, and provides tenants for numerous rental properties in the region.

The Willington workforce is well educated, highly skilled, and committed to the Town's high quality of life. Customized job training services are also available through the local Colleges and Technical Schools.

*(Continued on the back page)*





### More on living in Willington:

**Housing:** The housing stock in Willington is highly affordable by both county and state standards. Willington residents have the choice between well built historic homes and newer family-oriented subdivisions, which have been constructed in close proximity to highway access.

**Library:** Willington boasts a new state of the art public library located on the historic Willington Green on Route 74. The new facility contains a children's library, meeting rooms, and an event space, also used for club meetings and social gatherings.



### More on working in Willington:

Willington is strategically located along Interstate 84 with ready connections to Hartford and New York, as well as Springfield, Worcester, Providence and Boston. It is home to a large FedEx distribution facility and an expanding highway service area including a hotel.

A north to south rail freight line is also located along the west side of Willington. A passenger rail service line from Amherst Massachusetts to New London, Connecticut is currently being proposed.

Various commercial development opportunities are present along the southern end of Route 32 (near UCONN), on the western end of Route 74 (adjacent to the highway exit), and in the northern end of town, near the highway junction with Route 320. Willington also offers extensive active and fallow farm lands, horse farms, campgrounds, and noted dining locations (try the renowned Willington Pizza!).

### Regional Assets:

Willington is one of nine towns that make up the Windham Council of Governments. The Council provides transportation, planning, and economic development services, thereby fostering collaboration and efficiency in government.

The Windham region is located in Connecticut's "Quiet Corner" and is noted for its expanses of protected forests, lakes and rivers, and farms. But it is so much more than just its rural beauty as arts, culture, education, historic sites, and accessible communities and neighborhoods truly make for a great place to live, to visit and explore, and to grow a business.

- University of Connecticut
- Eastern Connecticut State University
- Quinebaug Valley Community College
- Windham Hospital
- Natchaug Hospital
- Windham Airport – Freedom Jets Aviation
- The Last Green Valley
- Windham Regional Chamber of Commerce
- Local Farmers Markets and Farms
- Historic Sites and Cultural Resources
- Connecticut Wine Trail
- Lakes and River Systems
- Willimantic White Water Alliance
- Extensive State Forests and Parks
- Great Independent Shops and Eateries
- Convenient Shopping Centers
- Windham Council of Governments

